



Opportunities

- *Support Local Schools -*
- *Partner With the Food Bank -*
- *Accompany People Experiencing Homelessness and Hunger -*
- *Reach out Beyond Rochester -*

By providing immediate relief to those who are hungry, ELCA World Hunger meets basic needs and recognizes the universal human right to food. They work to connect people with the resources they need to produce food and gain access to clean water, education, health care and sources of income so that long-term, sustainable change can be accomplished.



How do we help?

Mount Olive supports ELCA World Hunger in a variety of ways. Proceeds from soup suppers during Lent, children supporting God's Global Barnyard and the Malaria Campaign, and making purchases from the Good Gifts catalog all support ELCA World hunger and it's partners to help make it possible for the ELCA to respond, supporting sustainable solutions that get at the root causes of hunger and poverty.

To Get Involved:

Provide soup and/or serve on Wednesday evenings during Lent. Sign up in the gathering area. Support children's initiatives throughout the year. Purchase from the Good Gifts catalog. Donate to the free will offering during Lenten meals or through a designated offering.

Contact: Nancy Britson for soup suppers nancy@molive.org

Dorothy Day House

What is this Ministry?

Dorothy Day (1897-1980) began serving the homeless in the 1930's in response to the devastating culture of homelessness and poverty. To this day, Dorothy Day houses offer shelter and food for homeless people.

How do we help?

Volunteers are needed on the first Friday of each month from 5pm – 7pm to cook, serve the meal, pray, and eat with those staying at the Dorothy Day House (usually up to 25 people).

To Get Involved:

Sign up in the Gathering area to help. Additional information is available in the sign up folder. Children are welcomed and encouraged to come with their parents!



Contact: Anna Strand annabstrand@gmail.com

Channel One Food Bank

What is this Ministry?

Channel One is the local food shelf for Olmsted County. They served over 8,000 families last year.

How do we help?

- During Lent 2015, Mount Olive collected more than 800 pounds of food items which provided 8,960 meals for people in need. We plan to continue this annually.
- We collect a special offering for Channel One during Lent as well as on Thanksgiving.
- Our total budget for this ministry is \$2000.00.



To Get Involved: Mount Olive always has a Channel One barrel for non-perishable foods in the front entry

What is this Ministry? The Rochester Alternative Learning Center is a public school for middle school and high school students who need a different school setting to be academically successful. Students include migrant students, students working 20 hours a week, those working on graduation requirements, and students who have young children who are cared for right at the school.

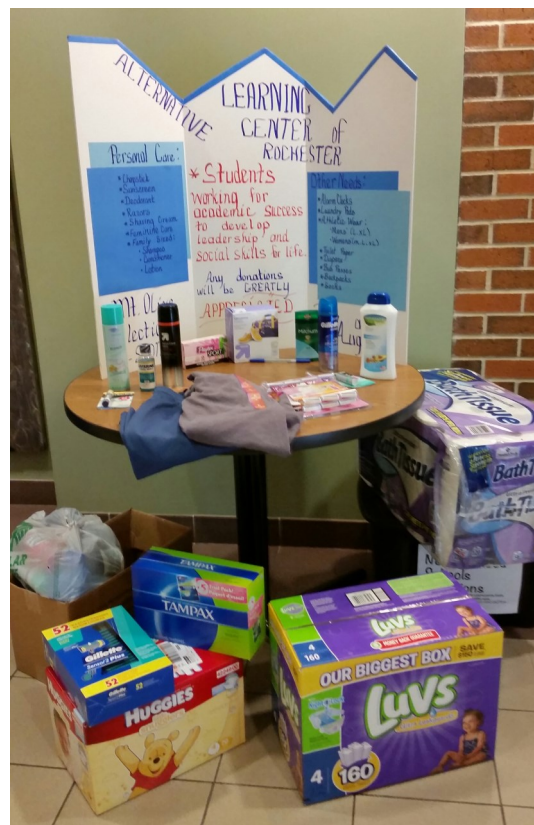
How do we help?

Our congregation collects personal care items and clothing to help these young adults to become independent, capable adults in our community.

To Get Involved:

Watch for the collection box in the front entry at different times during the year: deodorant, razors/shaving cream, chap stick, sunscreen / lotion, feminine protection, diapers, alarm clock, athletic wear, laundry detergent pods, men's shorts (L/XL), toilet paper are items collected to help these students.

Contact: Pam Hansen praehansen@gmail.com



Neighborhood Schools



What is this Ministry?

Mount Olive began a special relationship with a neighborhood elementary school, Elton Hills. We have provided low income students with dozens of coats, boots, gloves, and other items they may need. This ministry has grown to include Hoover and Gage Elementary Schools., as well.

How do we help?

When the schools call with a need, we gather the supplies. There is an opportunity to sign up to provide items.

To Get Involved: Donate gently used or new items for elementary age students: coats, snow pants, gloves, boots (especially youth small) and clothing, such as elastic waist pants in all sizes, underwear, or socks. If you have anything to donate please bring it to the church in a grocery type bag. There is a bin marked "neighborhood school donation" in the office. Indicate on your Volunteer Interest Form or sign up in the gathering area if you want to be on the list to provide items as the needs arise!



Seeking to put God's love into action, Habitat for Humanity brings people together to build simple, decent, affordable housing in partnership with people in need. Families work up to 500 "sweat equity" hours building their home. Partner families purchase the house from Habitat with a no-profit mortgage. Churches and other organizations donate their time and skill to build these homes. Once in a stable home, Rochester Habitat homeowners have experienced:

- Their first family member graduating from college and improved grades at school
- Job promotions and
- Improved health
- The peace of mind that comes from knowing that YOU are your own landlord

How do we help?

- Mount Olive volunteers gather on the second Saturday of the month to work on a house in the Rochester area from 9 am to 4 pm. You can come for whatever time period works with your schedule. No construction experience is necessary.
- We provide \$1,700.00/year from our budget.
- Help with a gift wrapping fundraiser at the mall in December.
- Help with the Women Build Project in the Spring.



To Get Involved:

Sign up in the gathering area to help with the upcoming home. Watch for gift wrapping sign up later in the fall.

Contact: [Jim Berg](mailto:berg.james2@mayo.edu) berg.james2@mayo.edu

Interfaith Hospitality Network (Family Promise)

What is this Ministry?

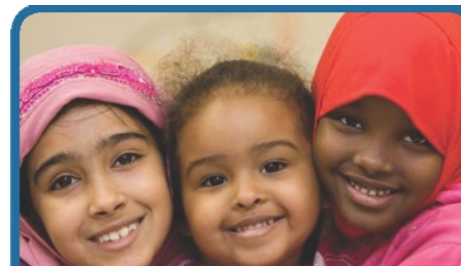
Interfaith Hospitality Network (IHN) is a network of volunteers from 49 faith communities who offer food and shelter to families who find themselves homeless. IHN offers these families the basic necessities of life food, shelter and security while they are going through their personal crisis. The network operates 365 days a year and has room for 14 people. Host churches host families for a week at a time. Buddy and support churches supply volunteers to help serve the families.

How do we help?

Mount Olive hosts families for one week at a time. Volunteers provide hospitality in the evening and overnight as they stay in our specially prepared rooms. We host four weeks out of the year. Volunteers help by cooking and serving food, playing with the families with young children, staying overnight, or driving families to and from Mount Olive. Our Congregation provides \$2000 per year in support of IHN and an additional \$500 is budgeted for hosting.

To Get Involved:

All volunteers must be trained with the exception of those helping with set-up and tear-down. The next training date at Mount Olive is **November 8 at 11:45 am**. Lunch and training for volunteers will be provided to prepare for our November hosting week. Watch the bulletin and newsletter for sign-up opportunities prior to each hosting week.



What is this Ministry?

Lutheran Social Service (LSS) is the largest social service agency in Minnesota. Programming includes: adoption services, counseling services, veterans support, youth homelessness, and disaster relief. LSS in Rochester oversees **LINK** (Living Independently with Knowledge), providing services to homeless youth and **'Ways to Give'** which provides support for families in need through Olmsted County.

How do we help?

- Mount Olive designates a LSS Ambassador who serves as an advocate for LSS. The ambassador offers feedback and support by finding ways for our staff, congregation and facility to contribute to LSS's mission.
- \$750.00/year is given from our congregation budget each year.
- Congregation members provide gifts through *Adopt a Family* and the *Ways to Give* Program.

To Get Involved: Watch the Messenger or contact your ambassador for current volunteer opportunities. In November each year, the ELCA Southeastern Minnesota Synod and LSS host an informational session for congregations. This is free of charge and open to those interested.

Contact:

Mount Olive LSS Congregational Ambassador, [Renee Schaefer vettelady54601@yahoo.com](mailto:Renee.Schaefer@vettelady54601@yahoo.com)

Backpack Program

What is this Ministry?

In the spring of 2012, Channel One approached Mount Olive with the idea of providing backpacks of food each week to students at John Adams Middle school. These would go to students who may not have any food over the entire weekend.

How do we help?

Mount Olive volunteers work with Channel One to portion and distribute backpacks containing food each week during the school year.



To Get Involved: Contact a member of the Service and Social Outreach team.

Contact: [Mark Schultze mark_schultze@yahoo.com](mailto:Mark.Schultze@mark_schultze@yahoo.com)

The Tree of Giving

What is this Ministry?

Pine Ridge Indian reservation in South Dakota is one of many reservations in extreme poverty. Churches partner to offer assistance by donating clothing and other needed items.

How do we help?

- In November and during the Advent Season, we have a Tree of Giving where people can place clothing items. There has been a change in focus from mittens and hats to the following items: children's t-shirts (not underwear shirts), girls hair accessories, sweatshirts, large size diapers, wool socks, etc. Items may be new or gently used.
- As the tree fills, items are sent to those at Pine Ridge reservation in South Dakota. Women of the ELCA assist in raising funds for the shipping costs.

To Get Involved:

What is the Ministry?

Lutheran World Relief is a non-profit organization that works with local partners to provide lasting solutions to poverty, injustice and human suffering.

How do we help?

- Mount Olive supports LWR by making **quilts**. These quilts not only provide comfort, but also provide an object that is useful in imaginative ways including a baby carrier, a sunshade, a shawl and most importantly a constant reminder that someone far away cares a lot.
- Mount Olive supports LWR by putting together **Personal Care Kits**. For the past few years, from the supplies provided by the congregation during promotion time, our Middle School Youth assemble the kits. After blessing during worship, they are sent to the LWR warehouse in the Twin Cities to be shipped overseas.
- Mount Olive supports LWR by putting together **Baby Care Kits**. We have a long history of assembling the Baby Care Kits by our Sunday School Youth. Again, the supplies are provided by the congregation and kits are assembled between services. After blessing during worship, they are sent to the LWR warehouse in the Twin Cities to be shipped overseas.
- Mount Olive supports The **LWR Coffee Project** which offers a fair, just and equitable marketplace for small-scale farmers around the world. Fair Trade coffee is served on Sunday morning and is available for purchase in the gathering area.

To get involved?

- **Donate** items as needed for the kits or fabric and thread for the quilters. Monetary donations are also used to buy batting in bulk.
- **Quilters** meet weekly on Thursday mornings at 9:00 am to assemble and tie quilts and sew the bindings. No sewing experience is required to participate.
- **Sewing at home:** Quilt top packages can be picked up in the blue tote by the Library. Baby jackets and blankets are in the totes in the Gathering area. Return completed items to the LWR wood box in the Gathering Area. If you are a knitter, check with Jolene Baker (contact information below) on knitting baby hats to go with hoodless jackets that are made.
- **Project Comfort:** In July a weekend is designated for "Project Comfort". Donations made during this weekend are sent to LWR to help pay for shipping all of the quilts and kits overseas. Current shipping costs are: one quilt--\$2.25, one Personal Care Kit--\$2.65, one Baby Care Kit \$1.30. A gift of \$100 will ship 44 quilts or 37 Personal Care Kits or 76 Baby Care Kits. In 2015, enough funds were raised to cover the shipping costs for Mount Olive.
- **Sponsor** Sunday morning coffee in celebration of a birthday or special occasion for only \$15.00.



Contacts:

Care Kits: **Jolene Baker**
jojo55906@yahoo.com

Quilts: **Elaine Monson**
dmonson@charter.net



his name without discrimination. Some of the ways they do this are through offering a free meal program, providing affordable housing to at-risk families, the Good Samaritan Dental and Health Clinics, and running the Caring Partners licensed adult day program.

How do we help?

Groups of Mount Olive members ring bells each Christmas season for the Red Kettle Campaign. Volunteers spread Christmas cheer while helping to raise money that will make a difference in the lives of people in crisis. Donations are used for food and housing programs, after-school activities for at-risk kids, and so much more.

To Get Involved:

- Sign up in the gathering area to ring bells, usually at Hy-Vee North, with other Mount Olive friends.
- Sign up on your own for a bell ringing slot, to help with a meal, or to volunteer in a variety of other ways. Visit www.salvationarmyusa.org or www.registertoring.com to learn more. Registration begins in late October for shifts in November and December.



Contact: Erin Sinnwell
etracy515@hotmail.com



F.I.S.H. (Fun in Serving Him)

What is this Ministry?

F.I.S.H. is a youth service group at Mount Olive for children in grades 1 - 5. We meet on Wednesday nights during the school year. Please come for dinner at 5:30 and mini-worship. Class meets from 6:35 to 7:30.

How do we help?

In the fall, the group makes ornaments to decorate a tree for the Hiawatha Festival of Trees. The proceeds from the sale of the tree benefit Hiawatha Homes in Rochester. During the winter, the group has engaged in many different types of service projects including; blanket tying for the newly baptized, packing food in backpacks for the students of John Adams Middle School, baking cookies for the firefighters and more. Spring projects have focused on those that benefit the church and community. Projects include: care package assembly for the college students, neighborhood food collection for Channel One, birdhouse construction, quilt tying and flower planting. This is a great way for our children to learn the importance of service. This year we will also be getting involved in worship. We have some new and excited things planned!

To Get Involved:

Fill out a registration form that can be found on the sign-up table in the



reaching out to serve others"

Acts 4:32-35



Habitat for Humanity-Women's Work Day 2015

Habitat needed a total of 50 volunteers during the Women Build week, including 25 women. There were a total of 59 volunteers with 32 women! Mount Olive's women worked on hauling rock for a retaining wall and digging out dirt to level off the yard.

Your Service and Social Outreach Ministry Team (SSOM)

Chair: Erin Sinnwell **Council Representative:** Mark Schultze

Team Members: Kathleen Haase, Mary Hunt, Renee Schaefer, Mark Schultze, Sara Smith, Erin Sinnwell, and Anna Strand

Youth Representative: Andi Stensland

Staff Liaison: Pastor Paul Moody

Service and Social Outreach Team Mission Statement:

The Service and Social Outreach Team coordinates services and social outreach ministries to help members reach into the community with